

**8. Janet Parker Laird
Ceramics**

Ceramic Artist
Janet was originally a
Poole Pottery artist.
Inspiration comes this year
from sketches made on a
trip to NZ and later used
with the colour mix of glazes
on an array of pots and
plates in various sizes.
Studio, workshop and garden on display.



Directions: A354 Blandford to Salisbury. In
Pimperne left to Stourpaine, first left, travel to the
end of road into Chapel Lane, left again, 2nd house
on left.

Accessibility: Gravel drive, one small step.

Opening Hours: Daily 10am-4pm
Elm Tree Cottage, Priory Gardens, Pimperne,
Blandford Forum, DT11 8XH
Tel: 01258 455187

E: janetmparker@btinternet.com

W: www.janetparkerlaird-ceramicartist.blogspot.com

10. Simon Polkinghorn

Drawings and paintings
mainly of the human
form and animals
using pastels,
charcoal, oils and
mixed media.
Expressive style,
sometimes bordering
on abstract.



Directions: Take B3082 to Tarrant Keyneston,
opposite the Pub take the turning signposted to
Tarrant Crawford, after half a mile turn right into St
Richards Close.

Accessibility: Off road parking, several steps to
venue.

Open: Sat. 25th, Sun. 26th, Sun 27th May. (Closed all
other days) 10am-4pm.

11 St Richards Close, Tarrant Keyneston, Blandford
Forum, Dorset, DT11 9JD

Tel: 01258 452213

Mob: 07910 953383

Email: s.polkinghorn@btinternet.com

9. Claire Thomas

Paintings of the
Blackmore Vale and
Cranborne Chase.
Studio, house and
garden open.
Pubs nearby.



Directions:

A354, Blandford to Salisbury Road. 1st left after
Farquharson Arms (from Blandford) or 2nd right
after Anvil Inn (from Salisbury). Easy parking on
road.

Accessibility: Flat to exhibition, 3 steps studio.

Open: Sat. 25th, Sun. 26th, Mon. 27th May,
Sat. 1st, Sun. 2nd June. 10am-4.30pm.

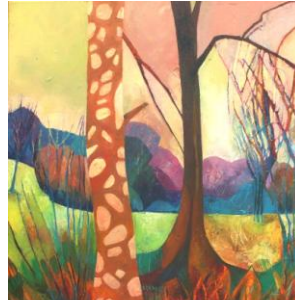
2 Berkeley Cottages, Church Road, Pimperne,
Blandford Forum, Dorset, DT11 8UA
Telephone: 01258 456474

E: clairethomas2010@hotmail.co.uk

W: www.clairethomas.co.uk

**11. Clare Shepherd
Painting**

Open studio, house
and Gallery at
Minchington, near
Cashmoor.
Large oil paintings
of Cranborne Chase.



Directions: A354 to Cashmoor, at The Inn on
Chase turn to Gussage St. Andrew, half-mile,
through S-bend, immediately left up farm track
(Myncen Farm). Field parking at house plus, **more
parking beyond farm entrance**; bear right, over
small bridge, large lay-by beside unused gates,
lovely 3-minute walk.

Accessibility: Limited; many steps and graveled
areas

Open: Sat 25th Sun 26th and Mon 27th May,
Sat 1st and Sun 2nd June. 10am-5pm.

82 Minchington, Nr. Blandford, DT11 8DH

Tel: 01725 552406 **Mob:** 07748 113152

Email: clare.shep@btinternet.com

Web: www.clareshepherd.com

Art Trail

New Dorset Art Group
Summer Art Trail
May 25th- June 2nd 2013

11 artists, living and
working in or near
Blandford Forum, open
their studios to visitors.
All Welcome.

1. Orsola Adlem



Printmaker,
Working studio.
Ongoing demonstration
of printmaking.
Exciting exhibition
of prints with a diverse
mix of subjects inspired
by nature and travel.
Also work in oils on show.

White Horse Inn nearby serving good food.

Directions: A350 Blandford to Stourpaine. 25m
past White Horse Inn and South Holme Road.
Entrance on left opposite village hall sign. Parking
on drive. A good resting point on the Blandford to
Sturminster Trailway

Open: Daily 10am-4pm

The Laurels, South Holme, Stourpaine
Nr. Blandford, Dorset DT11 8TG

Tel: 01258 454574

Email: orsola.adlem@hotmail.com

2. David Norton

Painting

David Norton is a musician who paints simple and direct oil paintings of landscapes in Dorset and France, portraits and still-lives.



Directions:

Leave Blandford on the Salisbury road and take second on right, after traffic lights, into Albert street. House is on right at junction of Albert St and Alexandra Street.

Open: Sat 25th Sun 26th Mon 27th May, Sat 1st and Sun 2nd June from 10.00am to 5.00pm each day.

20 Alexandra Street,
Blandford, DT11 7JE

Tel: 01258 459665

E: david@davidnorton.me.uk

W: <http://davidnorton.me.uk/>

5. Sue Fawthrop Painter-Semi Abstract Landscape and Coast

Vibrant works in oil, acrylic, watercolour and mixed media
Large garden studio in rural setting excellent local pub and good walking country.



Directions: Leave Blandford via West Street, passing The Crown on your right, straight across the roundabout, second right to Winterbourne Stickland. Follow road for 4 miles, at T junction turn right. After 1 mile, turn left signed Ansty and continue to follow the Ansty signs until you pass The Fox Inn on your left. Brewery Cottage is 50 metres further on the right. Park on the drive.

Accessibility: Disabled access

Open: Saturdays, Sundays, and Monday 27th; 11am- 5pm and during the week by appointment. . Brewery Cottage, Ansty Dorchester Dorset DT2 7PN

Tel: 01258 881189

E: sue.fawthrop@btopenworld.com

W: www.suefawthrop.me.uk

3. Vanessa Stanfield

Printmaker,
Specialising in
Collagraphy



Directions: Leave Blandford in Westerly direction over R. Stour. Passing Bryanston gates on right, up Dorchester Hill signed 'No through Rd'. House on left at top. Gravelled drive easy parking and access. Food at The Stour Inn.

Open: Sat: Sun: Mon: 25th, 27th, 27th May
Sun: 1st June

Times: 10-12.30pm and 2-4.30pm. Other times by arrangement

Badgerswalk, Dorchester Hill, Blandford St Mary,
BLANDFORD DT11 9AB

Tel: 01258 452379

E: vanessa.badgerswalk@gmail.com

6. Sue Bates

Sue paints gloriously blowsy watercolours. Cricketers Pub in village.



Directions: From Blandford take the second turn to Shroton off the A350. If you get to Iwerne Minster you have missed it. House on right after crossroads. Park on drive. Easy access to gallery, steps up to studio. Cricketers pub, and footpaths to Hambledon Hill nearby.

Open: Monday 27th May, Saturday and Sunday 1st/2nd June. 11am-4pm

Fieldways, Telegraph Street, Shroton,
Blandford Forum DT11 8QQ

Tel: 01258 861863

E: suebates359@gmail.com

W: www.suebates.net

4. Eleanor Spencer Norman

Painter/printmaker
Working studio.
Inspirations from
Purbeck coastline and
surrounding
countryside.



Directions:

A357, Blandford to Sturminster Newton Road. Through Shillingstone, to crossroads, left to Okeford Fitzpaine and right to Hammoon. Straight across little roundabout, last house on left, before bridge. From Child Okeford, first house on right after bridge. Easy Parking. Flat access.

Open: Sat.26th, Sun. 27th May, Sat.1st, Sun. 2nd June 10am-4pm

Firefly House, Hammoon
Sturminster Newton
Dorset DT10 2DB

Tel: 01258 863700

E: eleanornorman@btinternet.com

7. Catherine Pitchford

Printmaker inspired
By the Dorset
landscape and
Jurassic coast
using lino, drypoint,
solar etching, mono
and collagraph



Directions: as you come into Charlton Marshall from Blandford the Charlton Marshall pub is on the left. Pass the speed camera on the right, next road on your right is Green Close. As you turn into Green Close it is the first bungalow on your left and there is plenty of street parking.

Open: 10am-4pm each day **except** Friday 24th May and Wednesday 29th May.

1, Green Close, Charlton Marshall. Blandford Forum. DT11 9PF

Tel: 01245 456748

E: catherineannepitchford@gmail.com